



BOXEREQUIPMENT.COM

BOXER 375 CE

COMPACT TOOL CARRIER

PARTS MANUAL



RAYCO®

RAYCO MANUFACTURING LLC © 2021 ALL RIGHTS RESERVED
PRINTED IN USA

INDEX: PM375CE-21

Serial Number Location & Information

Your machine's Model, Weight, and Power Rating along with Serial Number and Date of Manufacture of your machine are located on the right side panel at the top.

The Engine information is located on a decal on your engine. Refer to your Engine OEM Manual for decal location.



Serial Number Location


Serial Number Location & Information

Track Loader = Type of Rayco Equipment

001 = The three digit number of produced

Boxer 375CE = Model of Rayco Equipment

Production Date; 01 = 2 digit month; 21 = 2 digit year



Machine Type: Track Loader

Model: BOXER 375CE

Serial Number: 375CE0010121

Power Rating: 24.5 Hp / 18.3 kW

GVW/Mass: 1913 lb / 868 kg

Electrical Dwg: 1234

Year of Mfg: 2021

Rayco Manufacturing Inc.
4255 East Lincoln Way, Wooster, OH 44691 USA

Always have a record of the model numbers and serial numbers for your machine to specify when ordering parts. Record your machine model and serial numbers below for your personal records.

Identification Numbers

	Model Number	Serial Number
Machine		
Engine		
Implement		
Implement		

Dealer Information

Name			
Address			
	Dealer Contact	Phone Number	Hours
Sales			
Parts			
Service			

Table of Contents

	Safety	6-7
	Foreword	9
	Frame	10-19
	Lift Components	20-23
	Engine Components	24-27
	Operator Controls	28-35
	Covers and Guards	36-37
	Schematics	38-43
	Decals	44-45
	Common Wear Parts	46
	Warranty	47-49

Safety

Certified Engine Maintenance

Proper maintenance and repair is essential to keep the engine and machine systems operating correctly. As the heavy duty off-road engine owner, you are responsible for the required maintenance listed in the Engine Owner Manual & Machine Operator, Maintenance & Service Manual.

Attach a "Do Not Operate" warning tag or a similar warning tag to the start switch or to the controls before you service the equipment or before you repair the equipment.

Know the width of your equipment in order to maintain proper clearance with you operate the equipment near fences or near boundary obstacles.

Be aware of high voltage power lines and power cables that are buried. If the machine comes in contact with these hazards, serious injury or death may occur from electrocution.

Wear a hard hat, protective glasses, and other protective equipment, as required.

Do not wear loose clothing or jewelry that can snag on controls or on other parts of the equipment.

Make sure that all protective guards and all covers are secured in place on the equipment.

Keep the equipment free from foreign material. Remove debris, oil, tools, and other items from the deck, from walkways, and from steps.

Secure all loose items such as lunch boxes, tools, and other items that are not a part of the equipment.

Know the appropriate work site hand signals and the personnel that are authorized to give the hand signals. Accept hand signals from one person only.

Do not smoke when you service an air conditioner. Also, do not smoke if refrigerant gas may be present. Inhaling the fumes that are released from a flame that contact air conditioner refrigerant can cause bodily harm or death. Inhaling gas from air conditioner refrigerant through a lighted cigarette can cause bodily harm or death.

Never put maintenance fluids into glass containers. Drain all liquids into a suitable container.

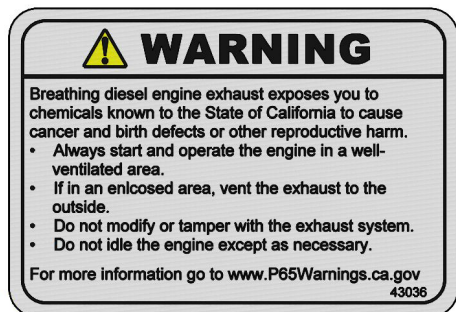
Obey all local regulations for the disposal of liquids.

Use all cleaning solutions with care. Report all necessary repairs.

Do not allow unauthorized personnel on the equipment.

Unless you are instructed otherwise, perform maintenance with the equipment in the servicing position. Refer to Operation and Maintenance Manual for the procedure for placing the equipment in the servicing position.

When you perform maintenance above ground level, use appropriate devices such as ladders or man lift machines. If equipped, use the machine anchorage points and use approved fall arrest harnesses and lanyards.



Foreword

Literature Information

The operators manual should be stored in the operator's compartment in the literature holder storage area. Rayco provides a binder to hold the Operator Service Manual, Parts Manual, Engine Manual along with other component manuals.

These manuals contain safety information, operation instruction, transportation information, lubrication information and maintenance information. This helps to ensure the best possible performance and service of the machine. Read and understand all instructions before attempting to operate this machine. This manual should be readily available for reference at all times. If this manual is lost, damaged or unreadable a new manual must be replaced. Contact Rayco Mfg LLC for a replacement manual.

Some photographs or illustrations in the publication show details of attachments that can be different from your machine. Guards and covers might have been removed for illustrative purposes. Continuing improvement may have caused changes to your machine which may not be included in this publication.

Continuing improvement and advancement of product design might have caused changes to your machine which are not included in this publication. Read, study and keep this manual with the machine.

Whenever a question arises regarding your machine, of this publication, please consult your Rayco dealer for the latest available information.

This Rayco machine was designed and manufactured by Rayco Mfg LLC, Wooster, Ohio. Due to continuous improvements, Rayco reserves the right to make changes in engineering, design and specifications, or discontinue manufacture, at any time, without notice or obligation.

Always have a record of the model and serial numbers for your machine to specify when ordering parts.

Safety

The safety section lists basic safety precautions. In addition, this section may include text and locations of warning signs and labels used on the machine.

Read and understand the basic precautions listed in the safety section before operating or performing lubrication, maintenance and repair on this machine.

Parts

Parts are readily found through illustrations with accompanying Rayco part numbers. The machine assembly is listed by basic groups to enable ease of finding parts.

Please consult your local Rayco Dealer or local Engine Manufacturer Dealer for obtaining engine parts and service.

Operation

The operation section is a reference for the new operator and a refresher for the experienced operator. This section includes a discussion of gauges, switches, machine controls, attachment controls, transportation and towing information.

Photographs and illustrations guide the operator through correct procedures of checking, starting, operating and stopping the machine.

Operating techniques outlined in this publication are basic. Skill and techniques develop as the operator gains knowledge of the machine and its capabilities.

Maintenance

The maintenance section is a guide to equipment care.

Maintenance Intervals

Use the Service hour meter to determine servicing intervals. Calendar intervals shown (daily, weekly, monthly, etc.) can be used instead of service hour meter intervals if they provide more convenient servicing schedules and approximate the indicated service hour meter reading.

Foreword

Recommended service should always be performed at the interval that occurs first.

Under extremely severe dusty or wet operating conditions, more frequent lubrication than is specified in the maintenance intervals chart might be necessary.

Perform service on items at multiples of the original requirement. For example, at every 100 service hours, also service those items listed under every 50 service hours and every 10 service hours or daily.

A Description of the Machine

The small but powerful Boxer 375 can handle “big machine” tasks while providing ease of access as a result of the smaller footprint. Able to handle a full complement of attachments, the gas-line-powered 375 allows you to minimize hand labor, reduce overhead and increase productivity. At 35” (88.9 cm) wide, the unit can fit through a standard gate. The 2,800 psi (193 bar) hydraulic operating system develops optimum hydraulic flow to run the machine’s auxiliary and propulsion systems, providing enough power to handle full-size attachments. A dedicated oil cooler to better manage hydraulic heat generation. With a universal compact utility loader mounting plate and quick-attach system, you can quickly and easily switch between any standard attachment.

DANGER

Never modify this machine!
Modifications to this machine will not only void the warranty, but may cause an unsafe condition that could result in injury or death to the operator.

DANGER

Never lift and/or transport persons, animals, explosive materials, caustic /poisonous materials, pressurized materials, pressurized canisters or any other solid or liquid dangerous substance.

Intended Use

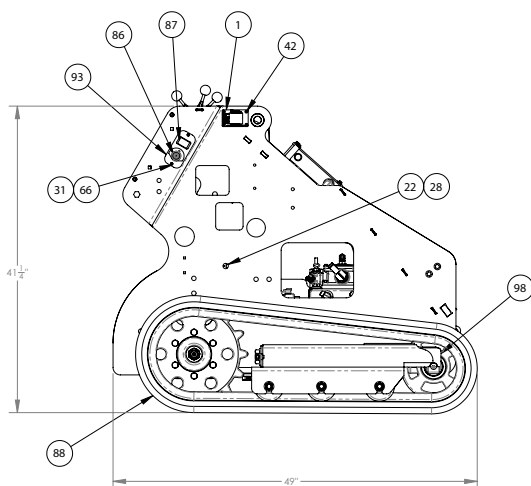
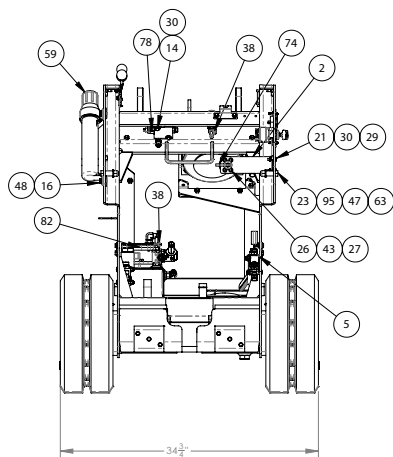
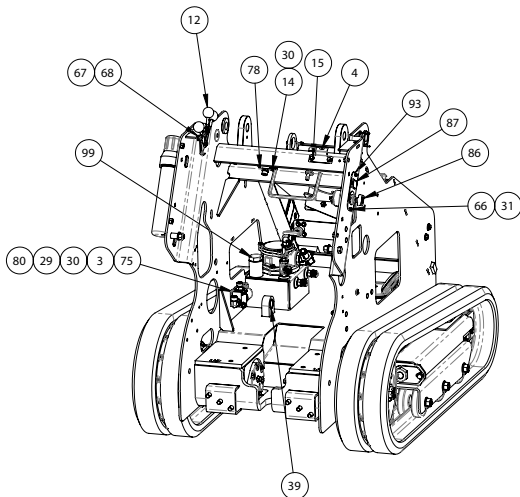
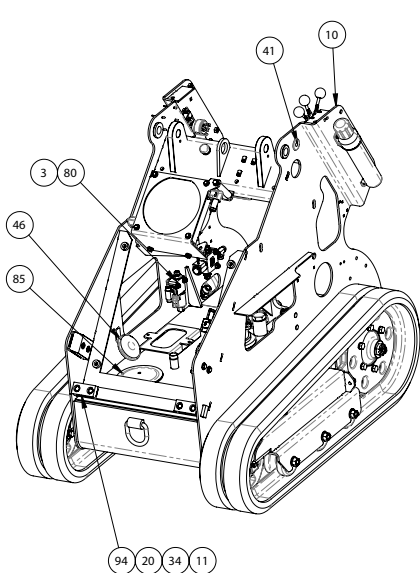
The 375 is designed to accommodate a huge array of attachments. It can lift, transport, and unload materials using a wide array of buckets, forks, and grapples. Other attachments include digging, boring, trenching, mowing, towing, raking, plowing, and compacting.

NOTE: Contact your local dealer or visit boxerequipment.com to view the entire list of available attachments. Only use approved Boxer attachments. Always read all documentation relative to your attachment and know how to operate them safely.

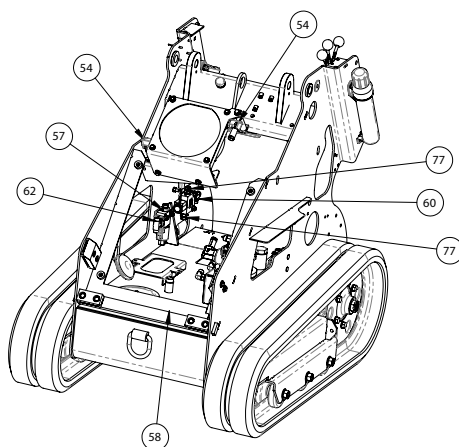
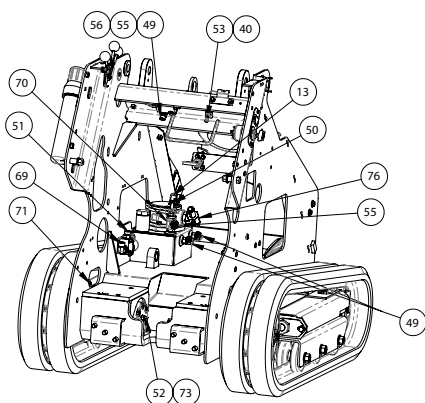
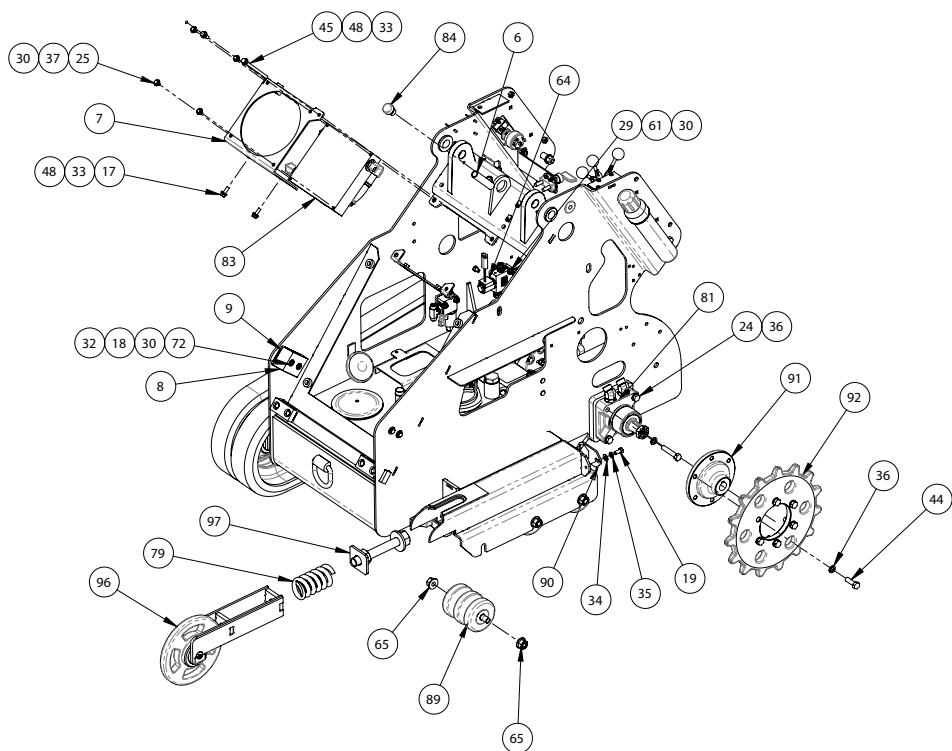
NOTICE

Tip Capacity: 1075lbs (488kg)
Operating Capacity: 375lbs (170kg)

44243 Frame Assembly Rev-B



44243 Frame Assembly Rev-B



44243 Frame Assembly Rev-B

ITEM	QTY	PART #	DESCRIPTION
1	1	37398	TAG- SN/VIN CE EPA
2	1	41903	BATTERY DISCONNECT MOUNT
3	2	42505	SPACER, SOLENOID VALVE
4	1	42516	FUSE BLOCK MOUNT PLATE
5	1	42966	SPACER, BRAKE VALVE
6	1	43092	SPACER, TUBE, HYD. COOLER
7	1	43147	WELDMENT, HYD. COOLER BASE
8	2	43980	BLOCK, GUIDE, BOOM ARMS
9	4	43986	SHIM, 12 GA. GUIDE BLOCK
10	1	44008	WELDMENT, FRAME
11	4	44335	SHIM,BUMPER, LOADER,BOXER
12	1	44347	THROTTLE CABLE RE-WORK
13	1	44436	FITTING, 90 DEG ELBOW W/RESTRICTOR
14	2	722107	BOLT HEX 1/4-20 X 1 3/4
15	2	722110	BOLT WHIZ 1/4-20 X 3/4
16	2	722203	BOLT HEX 5/16-18X 3/4 GR8
17	3	722205	BOLT HEX 5/16-18 X 1 GR8
18	4	722209	BOLT HEX 5/16-18 X 1 1/4
19	2	722302	BOLT HEX 3/8-16 X 3/4 GR8
20	4	722304	BOLT-HHCS 3/8-16X1.25 GR8 ZP
21	2	722320	BOLT CAR 1/4-20 X 1
22	1	722339	BOLT CAR 5/16-18 X 1" LG
23	2	722506	BOLT HEX 1/2 - 13 X 2 GR8
24	8	722508	BOLT HEX 1/2-13 x 2.5
25	4	722830	BOLT METRIC 6 X 1.0 X 16
26	4	724104	SCREW-#10-24 X 3/4 HH
27	4	724105	NUT HEX LOCK #10-24
28	1	724201	NUT HEX 5/16"-18 GR8
29	8	724508	NUT LOCK 1/4-20 NY-LOCK
30	18	726101	WASHER FLAT 1/4 USS
31	2	726103	WASHER LOCK #10
32	4	726201	WASHER - FLAT 5/16

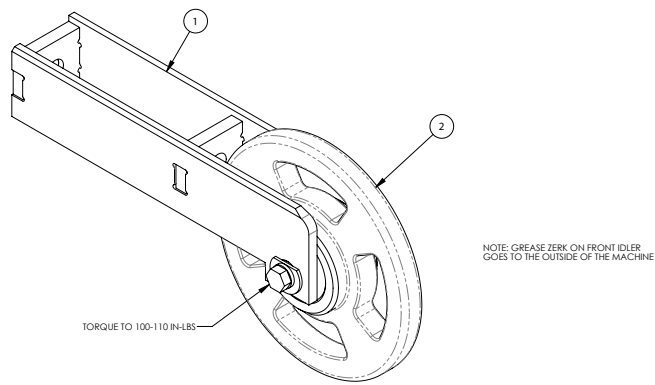
33	5	726202	WASHER LOCK 5/16" PLATED
34	6	726300	WASHER FLAT 3/8 SAE
35	2	726302	WASHER-LOCK 3/8
36	20	726502	WASHER LOCK 1/2
37	4	726950	WASHER METRIC LOCK 6MM
38	2	730024	HOSE CLAMP
39	1	730077	BUSHING STEEL 1.25X1X1
40	1	738119	FIT- -8MP - 6FP
41	1	750101	GROMMET-RUBBER 1/2" ID
42	4	750463	RIVET-3/16 X 3/8 STL-MAND
43	4	750493	WASHER FLAT #10
44	12	760979	BOLT HEX 1/2-20 X 1-1/2 GR8
45	1	761206	BOLT HEX 5/16-18 X 5" GR8
46	1	762788	HORN-HIGH TONE
47	2	763437	WASHER-FLAT 1/2" SAE ZINC
48	6	763757	WASHER FLAT 5/16 HARDENED
49	3	800266	FIT-EL90 -6MORB X -6MORFS
50	1	800272	FIT- -6MORB X -6 BEADED
51	1	800427	FIT-08ORFS X -08MOR
52	1	800441	FIT--4MORFS X -4MORB
53	1	801040	FIT -6MP -6MBEAD
54	2	801296	FIT-EL90-12BT-12MORB
55	2	801525	FIT-4MORFS-6MORB
56	1	801923	FIT-EL90 -4MORFS-6MOR
57	1	802506	FIT- -6MORFS X -8MOR
58	1	802854	FIT-PLUG-12MOR HEX HEAD
59	1	802998	TUBE-MANUAL 2" DIA X 12.5" LONG
60	1	803259	FIT- RUN TEE -6MOR -6FORFS -6MOR
61	2	803295	BOLT CAR 1/4-20 X 2
62	1	805346	FIT - TEE -06-06-08
63	2	805573	NUT-HNNL 1/2-13 ZP GR8
64	1	805793	VALVE-2POS/3WAY WP CONNECTOR
65	12	806203	NUT-FLANGE 5/8-11 LOCK
66	2	806231	SCREW-10-32 X1 PHIL-LIPS FILLISTER

44243 Frame Assembly Rev-B

67	2	806232	NUT-HNNL 10-32
68	2	806238	SCREW-SFHCS 10-32 X 5/8" ZP
69	1	806261	FIT-EL90-8MORFS X -8MORB
70	1	806318	FIT-TEE -6MORB-6FORB-6FORB
71	4	806325	FIT-EL45-10MORFS-10MORB
72	4	806340	NUT-STEELTOP LOCK 5/16-18 GRD C
73	1	806717	FIT-TEE -04MORFS -04MORB -04MORFS
74	1	806718	BATTERY SHUT-OFF SWITCH
75	4	807035	BOLT CAR 1/4-20 X 2 1/4
76	1	807036	FIT-EL90-12BT-16MORB
77	3	807165	FIT-6MORFS-4MORB
78	1	808123	VALVE-PRESSURE REDUCING, 300 PSI
79	2	M24741-190	SPRING, TRACK TENSION 2.87 X 5
80	2	M26676-203	VALVE, SOLENOID
81	2	M26713-009	MOTOR W/ BRAKE
82	1	M26838-315	FILTER, TANK MOUNT 25 GPM 3/4
83	1	M26844-131	COOLER, HYD ECO-4 W/12V FAN
84	1	M26849-275	BREATHER, 1/2" MPT NYLON

85	1	M26849-402	6" CLEANOUT COVER
86	1	M29211-935	IGNITION SWITCH W/KEY
87	1	M29316-962	METER, HOUR 12V DIGITAL
88	2	M29510-401	TRACK, RUBBER 180 X 36 X 72 "T
89	6	M29510-520	WHEEL SPOOL ASSY,MIDWHEEL
90	2	M30010-803	PLATE, TENSION LOCK
91	2	44919	CASTING, HUB -MACHINED COMP.
92	2	M30109-803	SPROCKET-15T
93	1	M30110-803	SHEET, SWITCHPANEL 322D
94	2	M30235-805	BUMPER, LOADER,BOXER
95	2	M33107-703	TUBING, CONTROL PANEL SPACER
96	1	M40009-803	ASSY, FRONT IDLER "MECH AD" LH
97	2	M40019-803	ASSEMBLY, TENSIONING BOLT
98	1	M40040-803	ASSY, FRONT IDLER,"MECH AD"-RH
99	1	M40088-803	DIPSTICK, HYDRAULIC
100	1	M47001-803	HARNESS, ALARM-LOW OIL

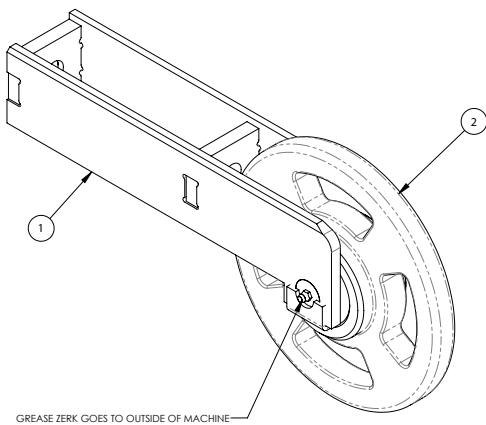
M40009-803 Left Hand Front Idler Assembly Rev G



ITEM	QTY.	PART #	DESCRIPTION
1	1	M40055-801	WELDMENT, TRACK FORK

2	1	M40070-803	ASSY, FRONT IDLER "MECH AD"
---	---	------------	-----------------------------

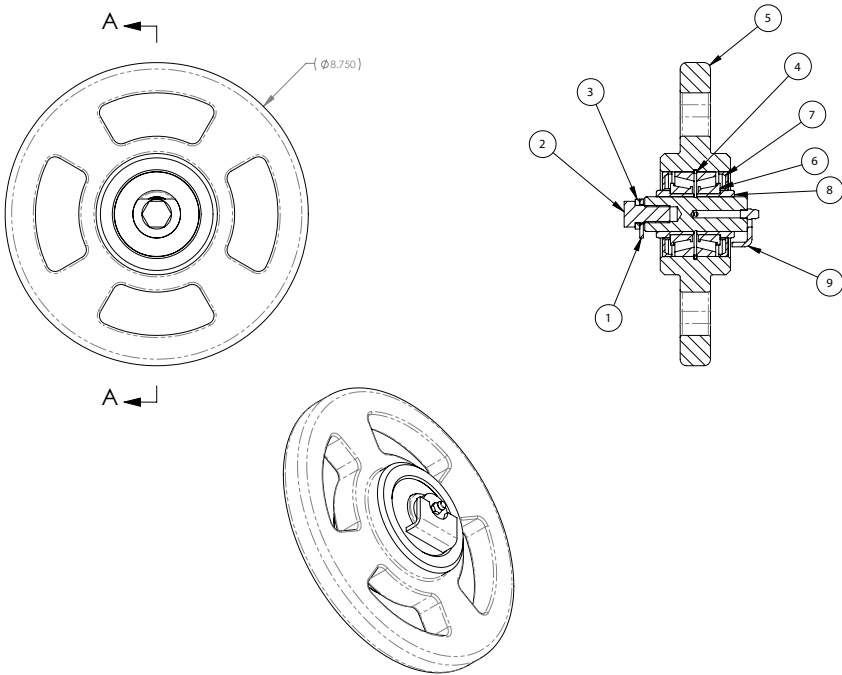
M40040-803 Right Hand Front Idler Assembly Rev-G



ITEM	QTY.	PART #	DESCRIPTION
1	1	M40055-801	WELDMENT, TRACK FORK

2	1	M40070-803	ASSY, FRONT IDLER "MECH AD"
---	---	------------	-----------------------------

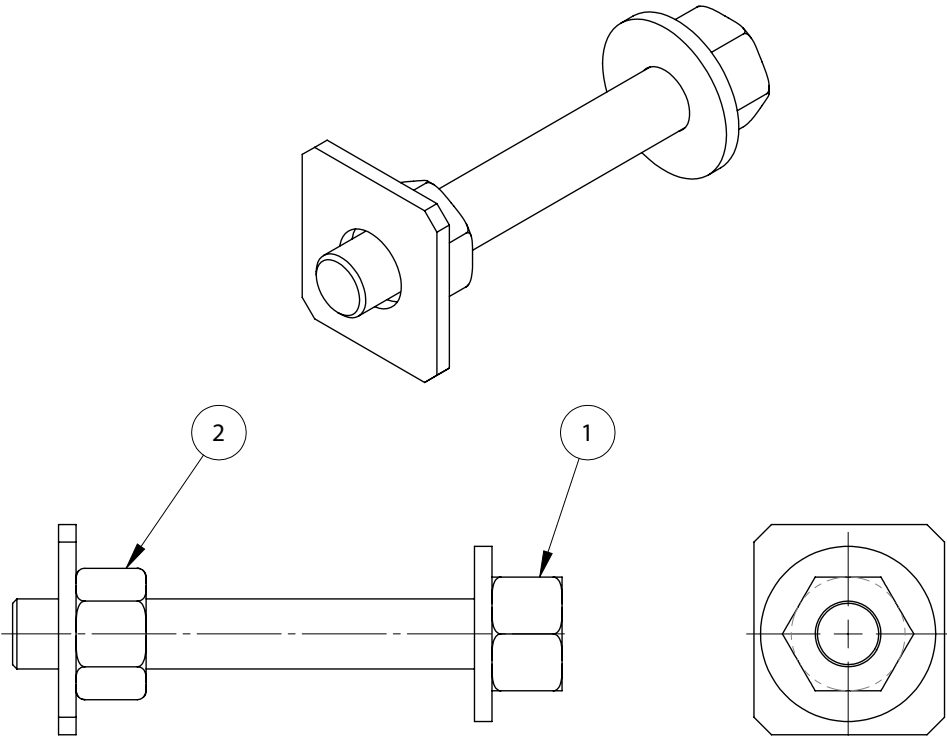
M40070-803 Front Idler Wheel Assembly



ITEM	QTY.	PART #	DESCRIPTION
1	1	39920	WASHER, CLIPPED 12GA X 1/2 X 1-3/8
2	1	722502	BOLT HEX 1/2-13 x 1
3	1	726502	WASHER LOCK 1/2
4	1	M24125-008	RING-SNAP DIN 472 HD 62MM

5	1	M29510-404	MACHINING, IDLER FRONT WHEEL
6	2	M29510-427	BEARING-30206A
7	2	M29510-431	SEAL-62 X 35 X 7MM
8	2	M30017-803	TUBE, IDLER
9	1	M40018-803	WELDMENT, IDLER WHEEL PIN -SHA

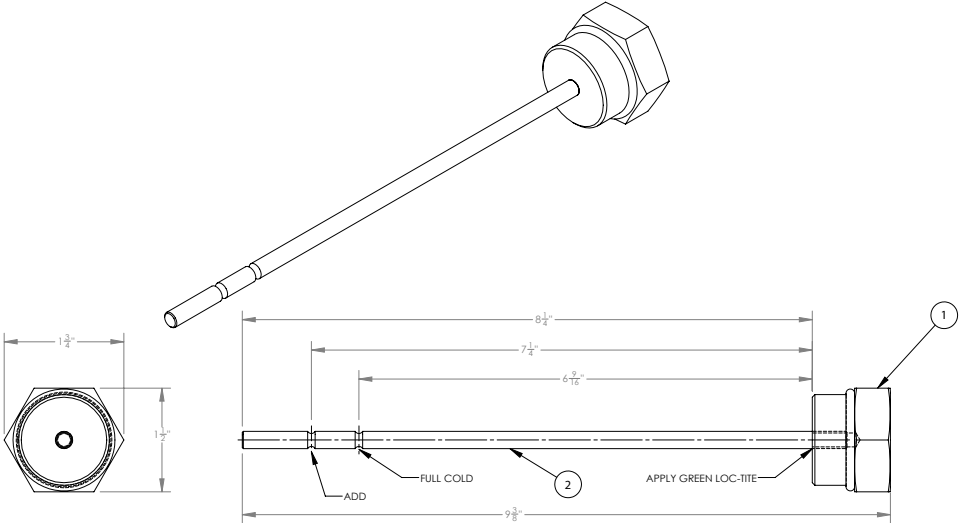
M40019-803 Tensioning Bolt Assembly Rev B



ITEM	QTY.	PART #	DESCRIPTION
1	1	M40057-801	BOLT, TRACK ADJUSTING

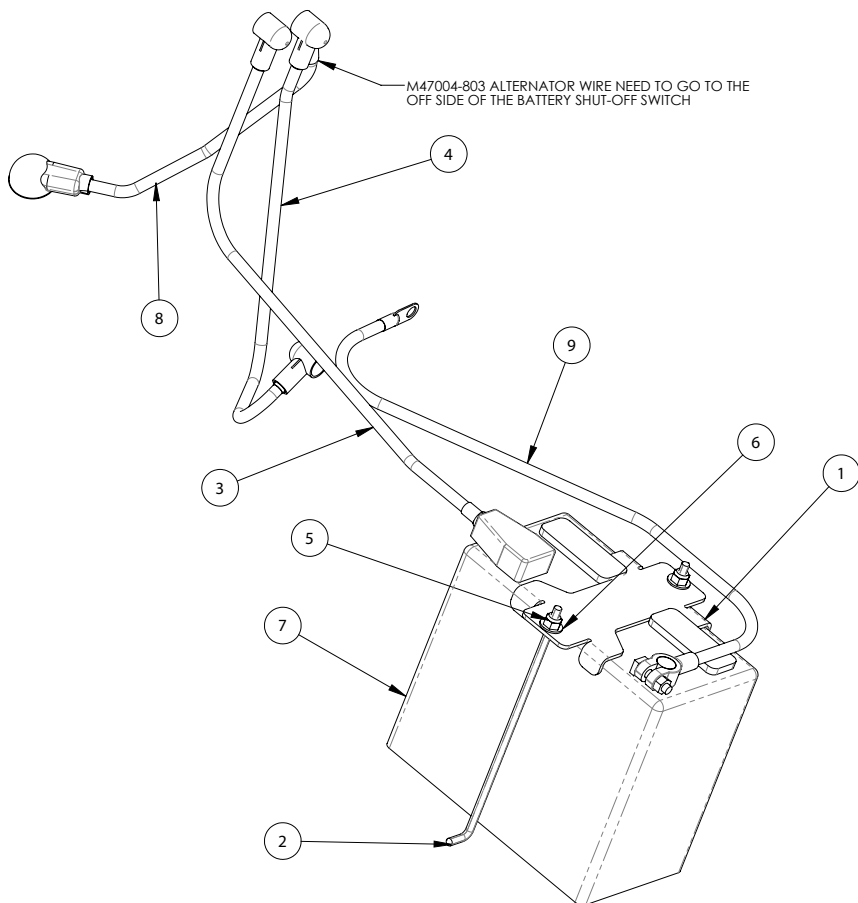
2	1	M40007-803	WELDMENT, TENSION- ING BOLT PLATE
---	---	------------	--------------------------------------

M40088-803 Hydraulic Dipstick Rev-B



ITEM	QTY.	PART #	DESCRIPTION
1	1	M32219-901	PLUG, #16 OR, DRILLED & TAPPED

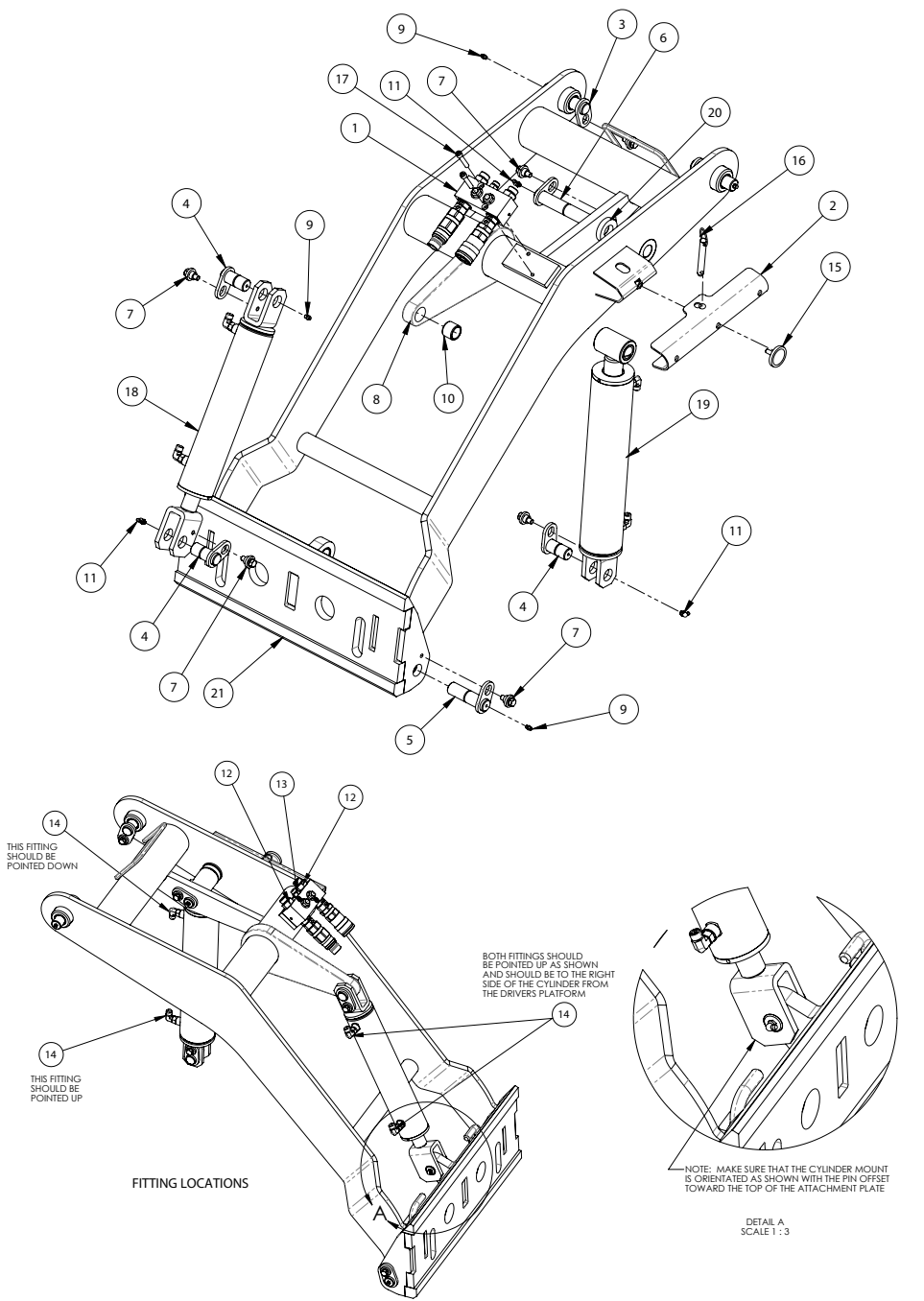
2	1	M30156-803	ROUND, DIP STICK
---	---	------------	------------------



ITEM	QTY	PART #	DESCRIPTION
1	1	40694	PLATE, BATTERY HOLD DOWN
2	2	40696	BATTERY L-BOLT
3	1	43032	CABLE-BATTERY RED 4 GA. 40"
4	1	43034	CABLE-SWITCH TO STARTER 4 GA 30"
5	2	724508	NUT LOCK 1/4-20 NYLOCK

6	2	726101	WASHER FLAT 1/4 USS
7	1	806234	BATTERY-51 500CCA
8	1	M47004-803	CABLE ASSY, POSI- TIVE
9	1	M47007-803	HARNESS ASSY, BAT- TERY CABLES

44293 Boom Lift Assembly

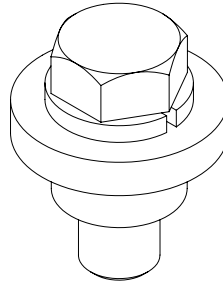
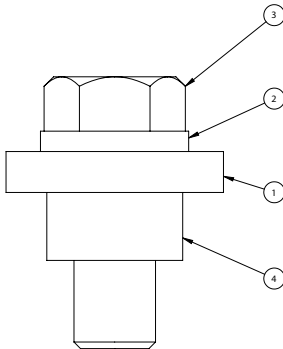


44293 Boom Lift Assembly

ITEM	QTY.	PART #	DESCRIPTION
1	1	41588	RELIEF MANIFOLD, 2 PUSH BUTTON
2	1	42509	LOCK, BOOM
3	2	43566	LOADER ARM PIN WELD
4	3	43567	BOOM CYLINDER PIN WELD
5	2	43568	ATTACHMENT PLATE PIN WELD
6	1	43571	BOOM CYLINDER PIN WELD
7	8	43576	FLOATING PIN SPACER ASM, 3/8"-16
8	1	44322	WELDMENT, BOOM ARM 375/385D
9	5	730011	ZERK-GREASE 1/4-28 STR
10	9	730077	BUSHING STEEL 1.25X1X1

11	3	730085	ZERK-GREASE 1/4-28 90DEG
12	2	800425	FIT-8MORFS X -10MOR
13	1	800441	FIT--4MORFS X -4MORB
14	4	800442	FIT-EL90-4MORFS X -4MORB
15	1	806239	KNOB-ROUND 5/16-18 X 3/4" STUD
16	1	806240	PIN, QUICK RELEASE 1/2" X 3"
17	2	806241	BOLT-SHCS 5/16-18 X 1 3/4
18	1	M26820- 301	HYD.CYLINDER,2.5X10.25 X1.250
19	1	M26820- 302	HYD CYLINDER,3 X 12 X-1.5
20	2	M30053- 803	SPACER,BOOM LIFT CYL,LIL BRUTE
21	1	M40011- 803	ATTACHMENT PLATE ASSY COMPLETE

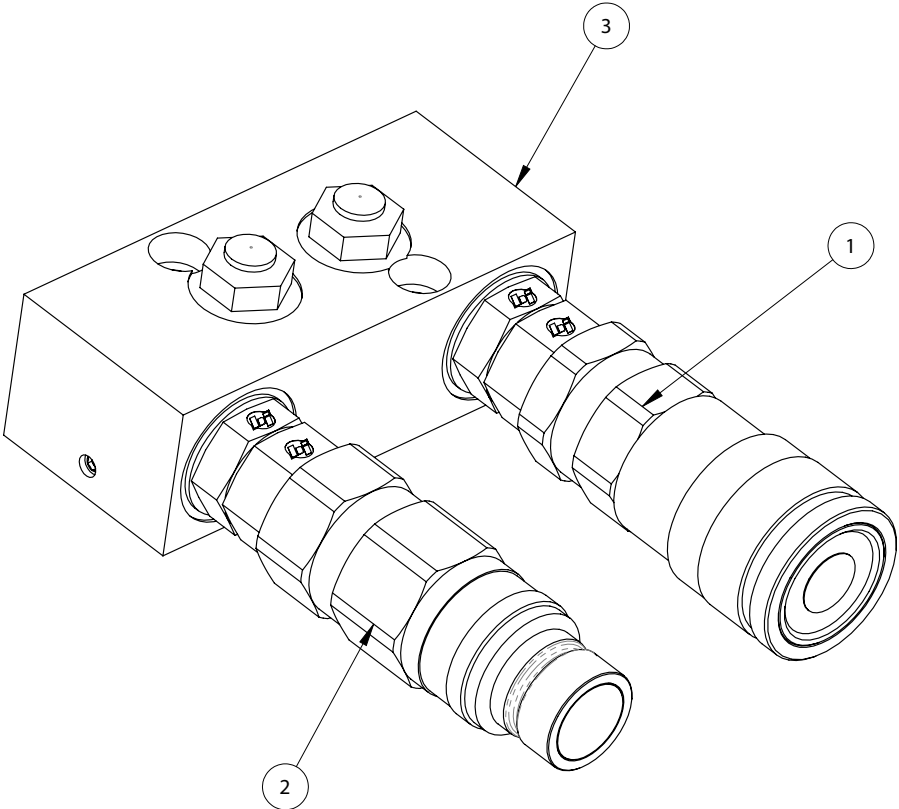
43576 Floating Pin Spacer Assembly



ITEM	QTY.	PART #	DESCRIPTION
1	1	803050	WASHER-3/8 SAE EXTRA-THICK
2	1	726302	WASHER-LOCK 3/8

3	1	722303	BOLT-HEX 3/8-16 X 1
4	1	43575	SPACER, SLOTTED LUG PIN

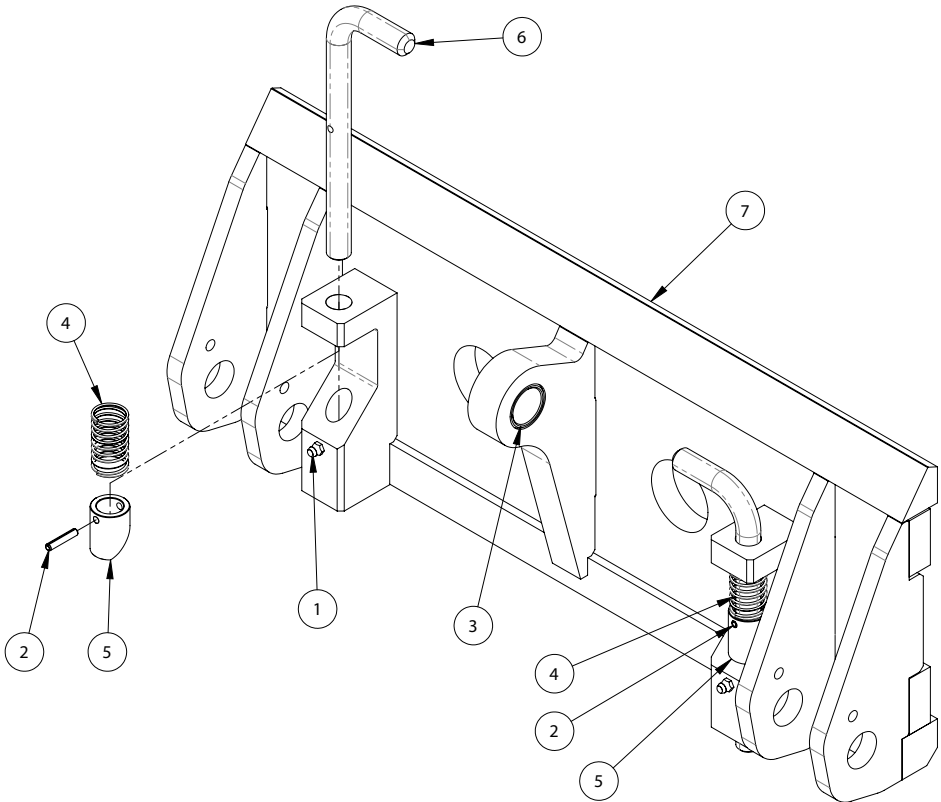
41588 2 Push Button Relief Manifold Rev-A



ITEM	QTY	PART #	DESCRIPTION
1	1	806795	FITTING, QDISC FFH08 58SAE F

2	1	806796	FITTING, FFH08 58SAE M
3	1	806798	RELIEF,MANIFOLD,2 PUSH BUTTON

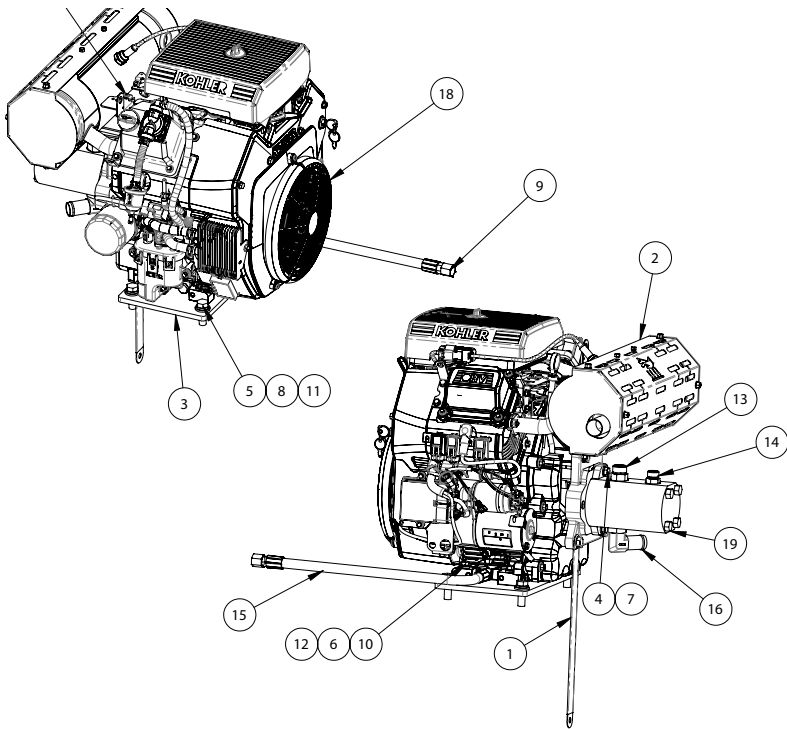
M40011-803 Attachment Plate Assembly Rev C



ITEM	QTY	PART #	DESCRIPTION
1	2	730011	ZERK-GREASE 1/4-28 STR
2	2	730086	PIN-ROLL 3/16" X 1" ZP
3	1	730077	BUSHING STEEL 1.25X1X1
4	2	M24741-087	SPRING, 15/16OD X .080 9657K27

5	2	M30042-803	COUPLER, LATCH STOP
6	2	M30090-803	PIN, MALE COUPLER
7	1	M40105-806	PLATE, STEEL, ATTACHMENT, WELDMENT

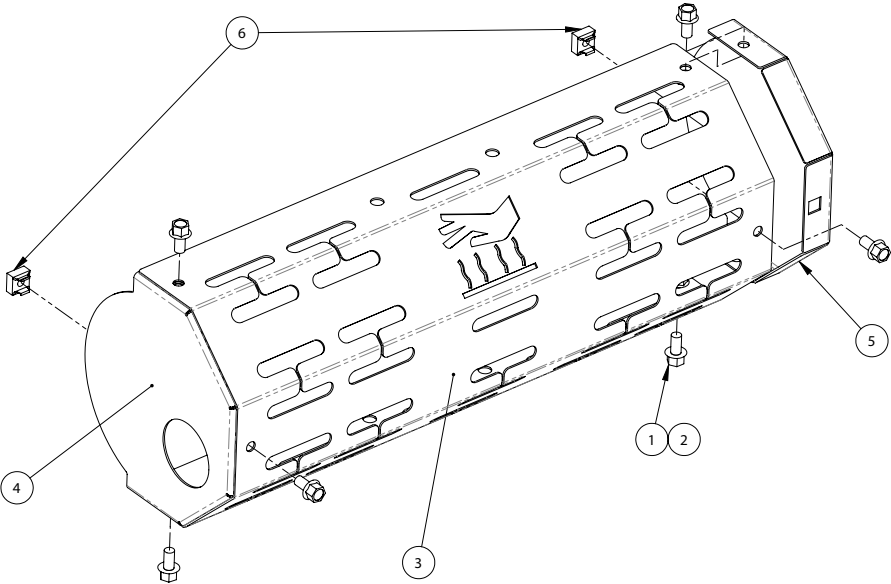
42486 Engine Assembly



ITEM	QTY.	PART #	DESCRIPTION
1	1	22274	WIRE-ENGINE GROUND
2	1	35405	GUARD, MUFFLER ASM RM27
3	1	42501	PLATE, ENGINE MOUNT, KOHLER
4	2	722303	BOLT-HEX 3/8-16 X 1
5	4	722504	BOLT HEX 1/2-13 x 1 1/2
6	4	726202	WASHER LOCK 5/16" PLATED
7	2	726302	WASHER-LOCK 3/8
8	4	726502	WASHER LOCK 1/2
9	1	738202	CAP - HEX 6MP
10	4	760269	BOLT HEX 5/16-18 X 1-1/2

11	4	763437	WASHER-FLAT 1/2" SAE ZINC
12	4	763757	WASHER FLAT 5/16 HARDENED
13	1	800176	FIT-10MFF X -10MOR
14	1	800427	FIT-08ORFS X -08MOR
15	1	804733	HOSE, OIL DRAIN 3/8 x 20"
16	1	805791	FIT-EL90-16MBEAD X -12MOR
17	1	806319	SCREW-10-32 X 3/4" SDHWHMS
18	1	807291	ENGINE-25HP KOHLER
19	1	M26711-003	PUMP, PLP20 (320 & 118)
20	1	M29295-025	CLAMP, THROTTLE 691024

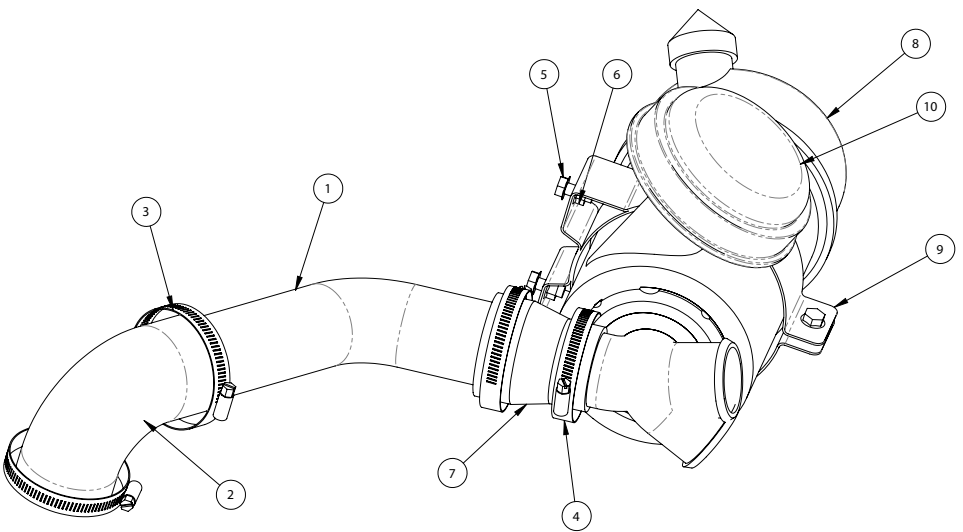
35405 Muffler Guard Assembly



ITEM	QTY.	PART #	DESCRIPTION
1	6	750765	BOLT WHIZ 1/4-20 X 1/2
2	4	750768	NUT-WHIZ 1/4-20 SERR FLANGE L/N GR8 ZN

3	1	35404	FRONT MUFFLER GUARD
4	1	35402	MUFFLER CAP RH
5	1	35401	MUFFLER CAP LH
6	2	800009	NUT-CAGE 1/4-20

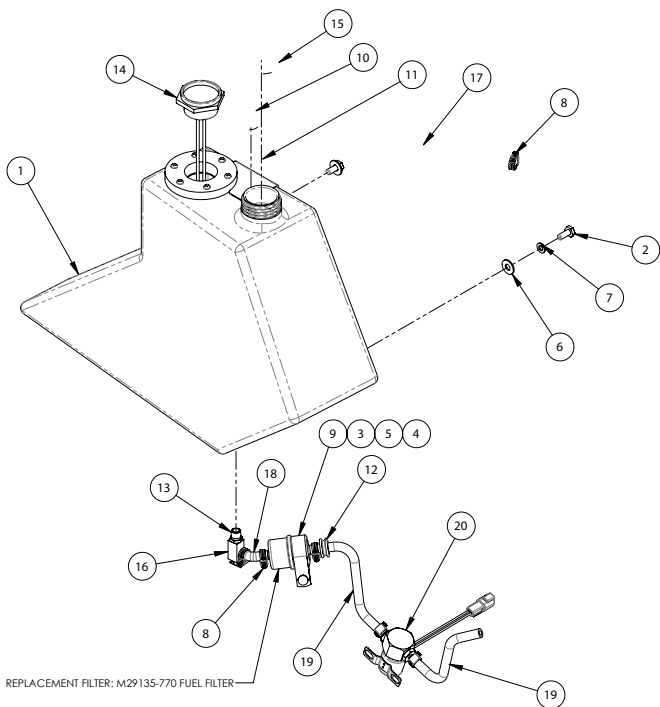
42497 Air Filter Assembly



ITEM	QTY.	PART #	DESCRIPTION
1	1	43165	INTAKE TUBE, 2.25" 55 DEGREE
2	1	43168	ELBOW-90DEG 2.25"
3	3	750118	CLAMP-HOSE 2-5/16"-3-1/4"
4	1	750415	CLAMP-HOSE 2" - 2-15/16"
5	3	750762	BOLT WHIZ 5/16-18 X 3/4

6	3	750764	NUT-WHIZ 5/16-18 SERR
7	1	807294	FLANGE L/N GR8 ZN REDUCER 2.25 - 2.0
8	1	M29295-002B	AIR CLEANER, REMOTE MOUNT
9	1	M29295-111	AIR CLEANER CLAMP
10	1	M29321-406	RAIN BONNET

42490 Fuel Circuit Rev-B



ITEM	QTY.	PART #	DESCRIPTION
1	1	43663	TANK, FUEL POLYETHYLENE 4 GAL.
2	2	722203	BOLT HEX 5/16-18X 3/4 GR8
3	1	722320	BOLT CAR 1/4-20 X 1
4	1	724508	NUT LOCK 1/4-20 NYLOCK
5	1	726101	WASHER FLAT 1/4 USS
6	2	726201	WASHER - FLAT 5/16
7	2	726202	WASHER LOCK 5/16" PLATED
8	7	730024	HOSE CLAMP
9	1	764409	CLAMP-VINYL COVERED1-3/4"
10	1	801680	VENT-ROLL OVER
11	1	801681	GROMMET-ROLL OVER VENT

12	1	M24721-389	RUBBER GROMMET
13	1	M25312-001	PIPE BUSHING
14	1	M26849-043	THREADED FUEL GAUGE
15	1	M26849-170	CAP, REPLACEMENT 202935 KELCH
16	1	M29295-013	VALVE, FUEL SHUTOFF 1/8NPT W/S
17	1	M32249-901	HOSE, FUEL, BOXER 322D
18	1	M32389-901	1/4" FUEL HOSE X 2 1/2
19	2	M32390-901	1/4" FUEL HOSE X 9
20	1	M40558-901	ENGINE,ELECTRIC FUEL SHUTOFF
21	1	T-3055	TEMPLATE, HOLE LOCATION

28

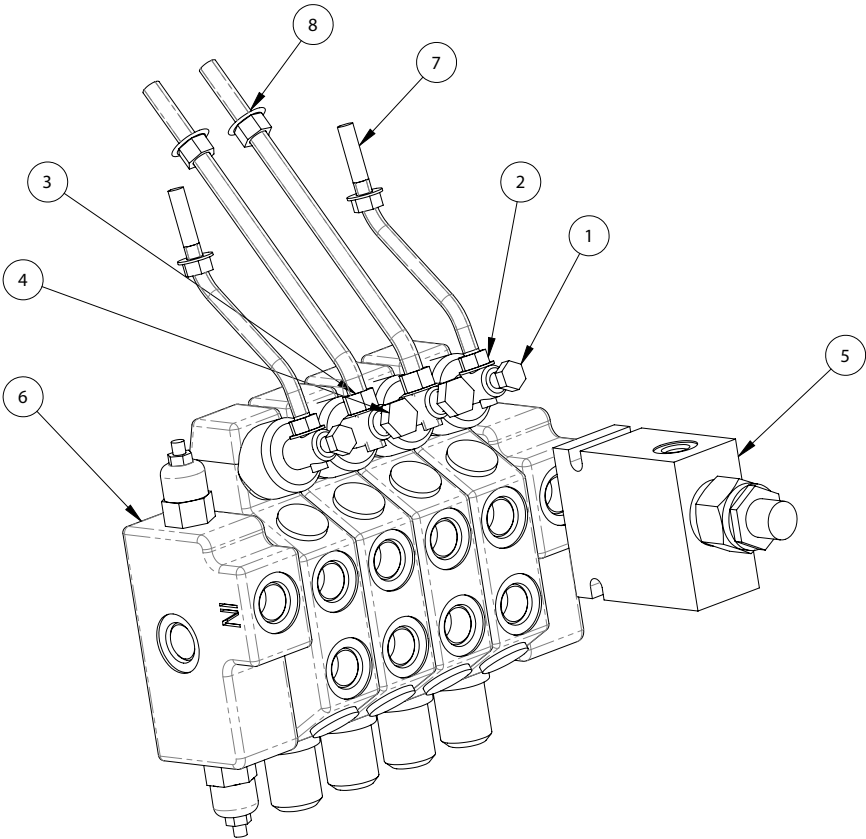


44296 Hydraulic Controls

ITEM	QTY.	PART #	DESCRIPTION
1	1	41754	SWITCH, SAFETY TETHER
2	5	722204	BOLT HEX 5/16-18 X 2 3/4 GR8
3	4	722339	BOLT CAR 5/16-18 X 1" LG
4	4	722837	BOLT-MHHCS 8 X 1.25 X 16
5	9	750050	NUT LOCK 5/16-18 NYLON
6	4	801525	FIT-4MORFS-6MORB
7	6	801834	FIT-10MORFS X -08MOR
8	1	802475	FIT- EL90 -08MORFS X -08FORFS SWIVEL
9	1	802506	FIT- -6MORFS X -8MOR
10	1	803259	FIT- RUN TEE -6MOR -6FORFS -6MOR
11	1	806261	FIT-EL90-8MORFS X -8MORB
12	1	806262	FIT-EL90-6MORFS X -4MORB
13	2	806277	FIT-TEE-08MORFS-08MOR-08MORFS
14	1	806328	FIT-EL90 -10MORFS-10MORB

15	1	806349	NIPPLE, COUPLER (TEST PORT)
16	1	806815	FIT-STR-10 MORB X -10MORB
17	1	806887	FIT-STR-08 MORB X -08MORB
18	2	806890	FIT- -6MORFS X -6MOR
19	1	806891	FITTING, HB 12 X 08 SAE ORING
20	1	807260	FIT-REDUCER-8FORFS-6MORFS
21	1	807279	FIT-PLUG-10MOR
22	1	M26538-416	DUST CAP
23	2	M29341-462	HANDLE, MOLDED -OUTER CON-TROLS
24	1	M29341-463	GRIP, 9100 TEX-TURED
25	1	M29341-497	KNOB
26	2	M29341-498	HANDLE, MOLDED DRIVE CONTROLS
27	1	M30045-803	PLATE, SPACER DIVERTER VALVE
28	1	M40016-803	ASSY, CONTROL VALVE
29	1	M40041-803	ASSY, DIVERTER VALVE
30	1	M40137-803	WELDMENT, JOY-STICK MOUNT
31	1	M40139-803	AUXILIARY VALVE ASSY

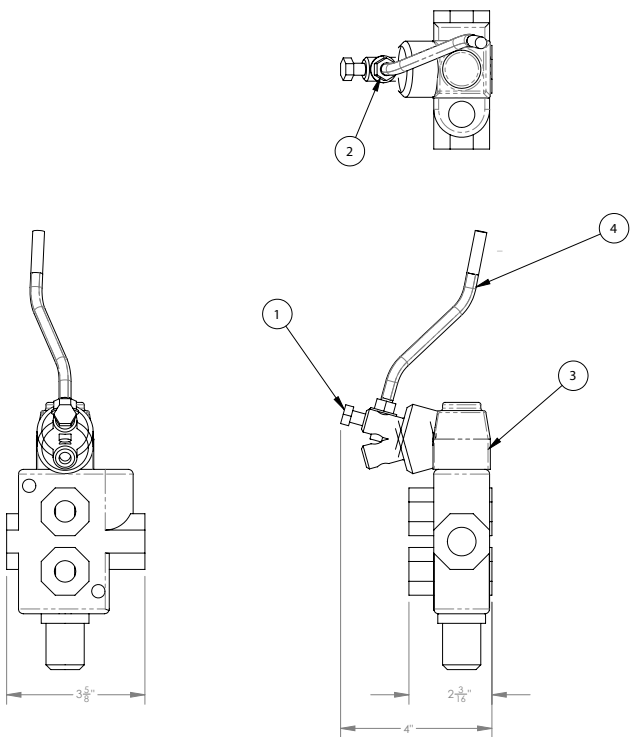
M40016-803 Control Valve Assembly Rev-B



ITEM	QTY.	PART #	DESCRIPTION
1	2	722837	BOLT-MHHCS 8 X 1.25 X 16
2	4	761228	NUT-HEX, FLANGE M8X1.25 ZP SJR
3	4	803049	NUT-MHNF M10 X 1.50
4	2	806886	BOLT-MHHCS M10 X 1.5 X 16

5	1	M26633-221	COUNTER BALANCE VALVE
6	1	M26661-207	VALVE, WALVOIL SD6/4 W/FLOAT
7	2	M30097-803	LEVER, BOOM/BUCKET
8	2	M30098-803	LEVER, SHAFT DRIVE

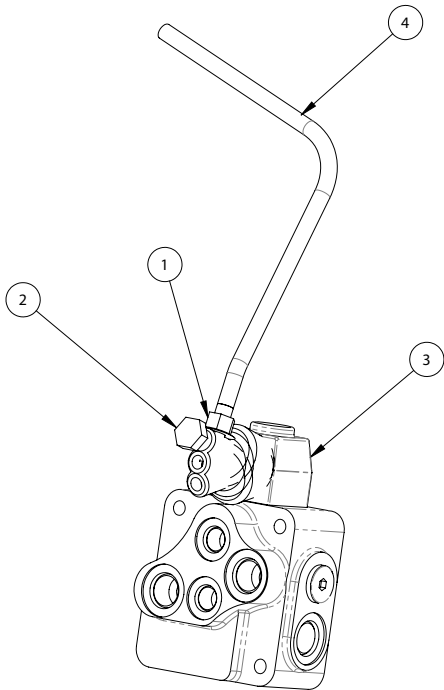
M40041-803 Diverter Valve Assembly Rev-C



ITEM	QTY.	PART #	DESCRIPTION
1	1	722837	BOLT-MHHCS 8 X 1.25 X 16
2	1	761228	NUT-HEX, FLANGE M8X1.25 ZP SJR

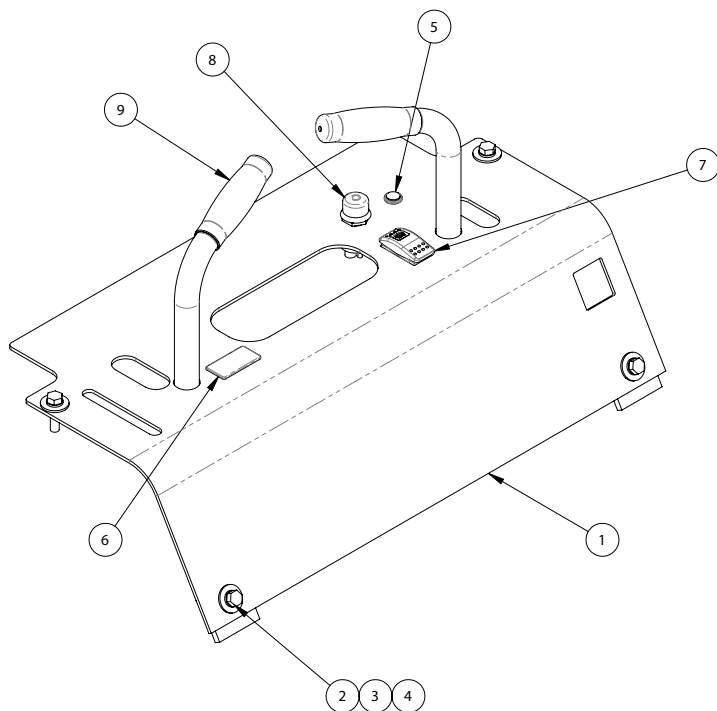
3	1	M26629-153	VALVE, WALVOIL SD4/1 (DIVERTER
4	1	M30097-803	LEVER, BOOM/BUCKET

M40139-803 Auxillary Valve Assembly



ITEM	QTY.	PART #	DESCRIPTION
1	1	803049	NUT-MHNF M10 X 1.50
2	1	806886	BOLT-MHHCS M10 X 1.5 X 16

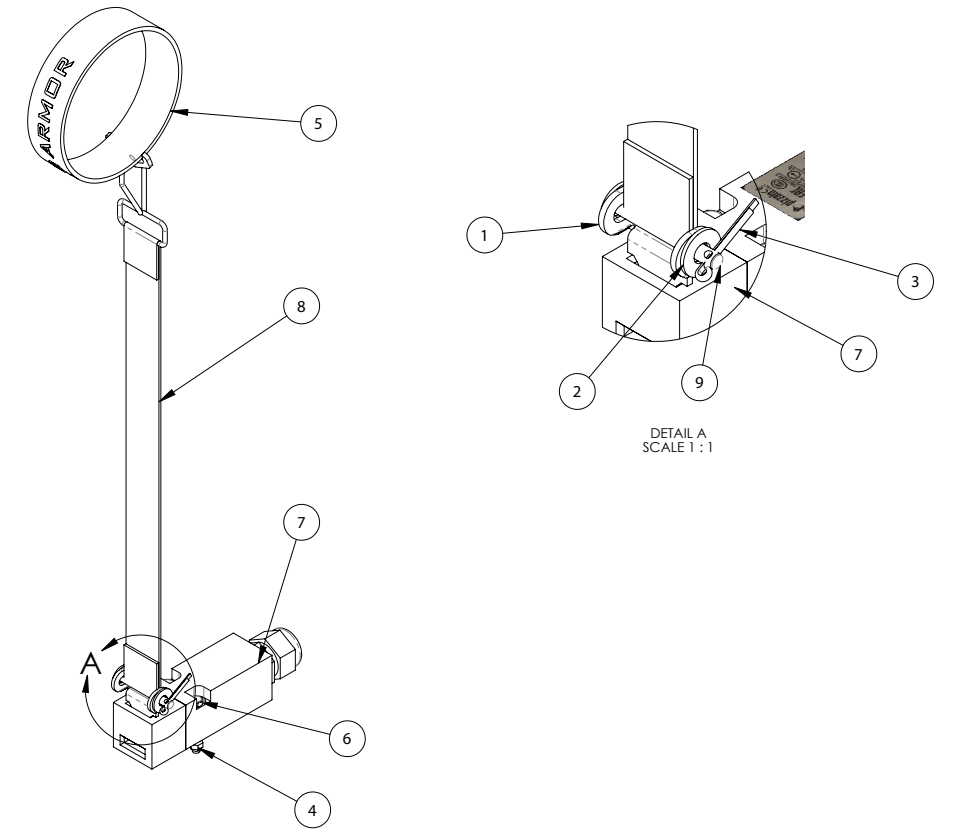
3	1	M26629-155	VALVE, WALVOIL SD5/1 (AUX-320)
4	1	M30096-803	LEVER, OPS

42489 Control Panel Assembly Rev-A

ITEM	QTY.	PART #	DESCRIPTION
1	1	42119	WELDMENT, CONTROL PANEL
2	4	722209	BOLT HEX 5/16-18 X 1 1/4
3	4	726202	WASHER LOCK 5/16" PLATED
4	4	726301	WASHER FLAT 3/8 USS

5	1	751038	INDICATOR LIGHT - LED, RED
6	1	760521	PLUG-BLANK SWITCH, BLACK
7	1	806684	SWITCH-ROCKER, PARK BRK
8	1	806709	SWITCH-PUSH BUTTON SPST MOM.
9	2	M29341-464	GRIP, 9100 TEXTURED .845 X 6"

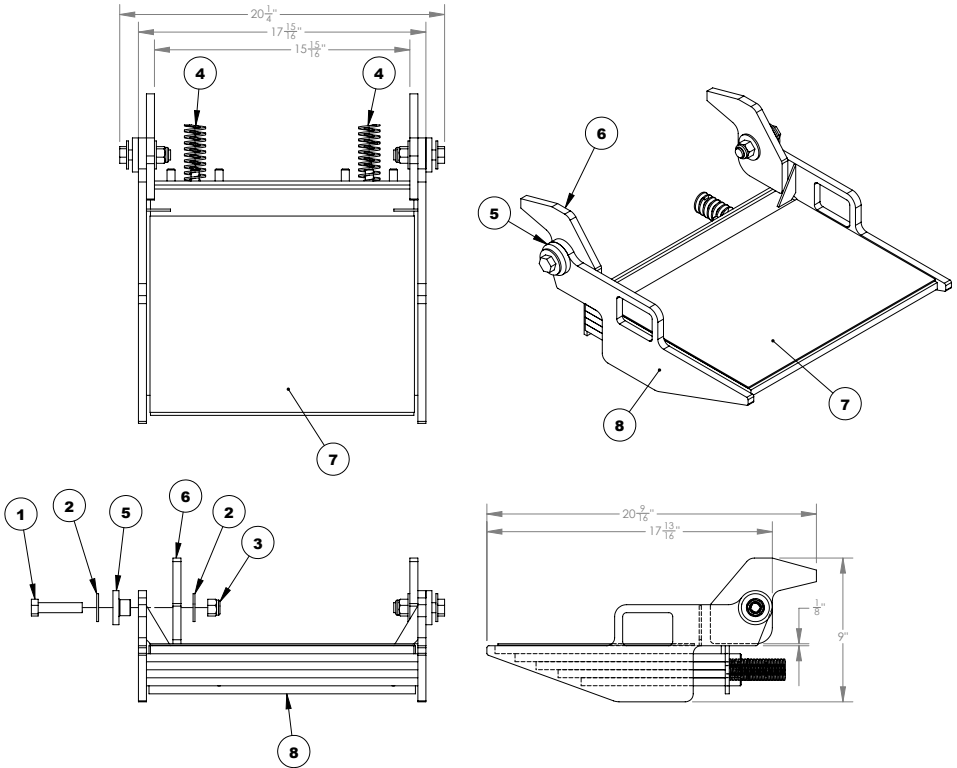
41754 Safety Tether Switch



ITEM	QTY	PART #	DESCRIPTION
1	1	35803	804734 CLIP REWORK
2	2	726203	WASHER FLAT 3/16 USS PL
3	1	728001	PIN-COTTER 3/32 X 1
4	2	760867	NUT-HNNL #8-32

5	1	801309	STRAP, WRIST
6	2	801966	SCREW-#8-32X1-1/2"
7	1	804734	HMMS ZP SWITCH-SAFETY W/ ACTUATOR
8	1	804787	STRAP, SAFETY TETHER
9	1	804788	PIN-CLEVIS 3/16 X 1.50

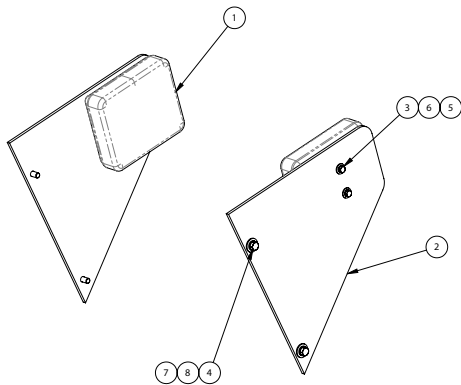
M40013-803 Operator Platform Rev A



ITEM	QTY.	PART #	DESCRIPTION
1	2	722708	BOLT HEX 5/8-11 X 2-3/4 GR8
2	4	726701	WASHER FLAT - 5/8"
3	2	763485	NUT-HNNL 5/8-11
4	2	M24741-188	SPRING, COMPRESSION DIE 1 1/2X

5	2	M30033-803	ROUND, OP BUSHING
6	2	M30050-803	PLATE, PLATFORM STOP
7	1	M32234-901	MATT, RUBBER FLOOR
8	1	M40022-803	WELDMENT, OPERATOR PLATFORM (3

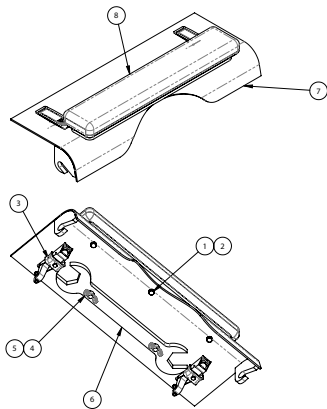
41920 Operator Side Guard Assembly Rev-A



ITEM	QTY.	PART #	DESCRIPTION
1	2	43235	PAD, SIDE GUARD, BOXER
2	2	41918	GUARD, OPERATOR SIDE
3	4	722103	BOLT HEX 1/4-20 X 3/4 GR8

4	4	722303	BOLT-HEX 3/8-16 X 1
5	4	726101	WASHER FLAT 1/4 USS
6	4	726102	WASHER-LOCK, 1/4"
7	4	726301	WASHER FLAT 3/8 USS
8	4	726302	WASHER-LOCK 3/8

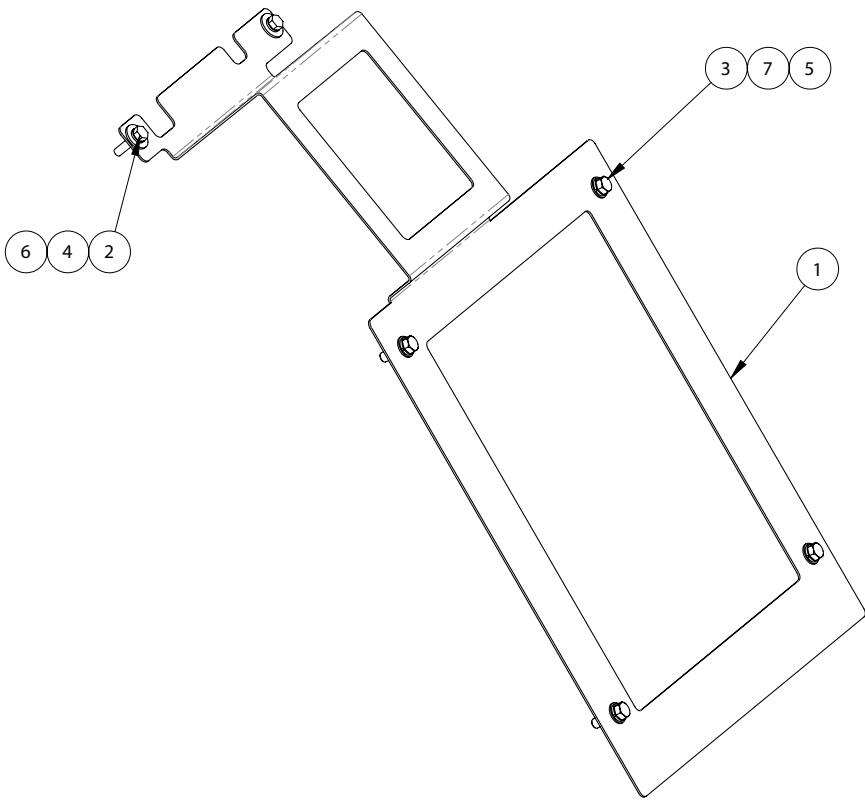
41921 Lower Dash Panel Assembly Rev-A



ITEM	QTY.	PART #	DESCRIPTION
1	1	40694	PLATE, BATTERY HOLD DOWN
2	2	40696	BATTERY L-BOLT
3	2	724508	NUT LOCK 1/4-20 NY-LOCK
4	2	726101	WASHER FLAT 1/4 USS

5	1	806234	BATTERY-51 500CCA
6	1	M47004-803	CABLE ASSY, POSITIVE
7	1	43032	CABLE-BATTERY RED 4 GA. 40"
8	1	M47007-803	HARNESS ASSY, BATTERY CABLES

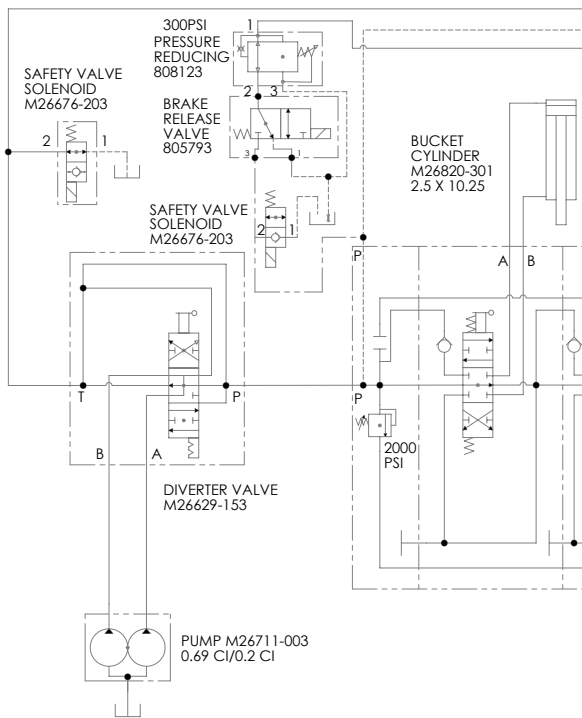
42488 Shroud Cover Assembly



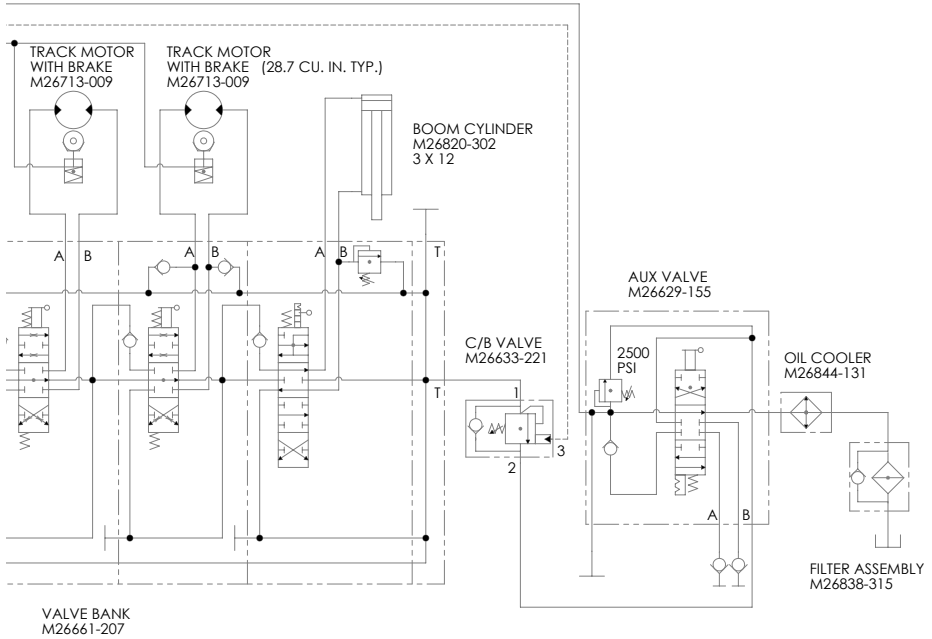
ITEM	QTY.	PART #	DESCRIPTION
1	1	42487	WELDMENT, COVER SHROUD
2	2	722209	BOLT HEX 5/16-18 X 1 1/4
3	4	722304	BOLT-HHCS 3/8-16X1.25 GR8 ZP

4	2	726202	WASHER LOCK 5/16" PLATED
5	4	726300	WASHER FLAT 3/8 SAE
6	2	726301	WASHER FLAT 3/8 USS
7	4	726302	WASHER-LOCK 3/8

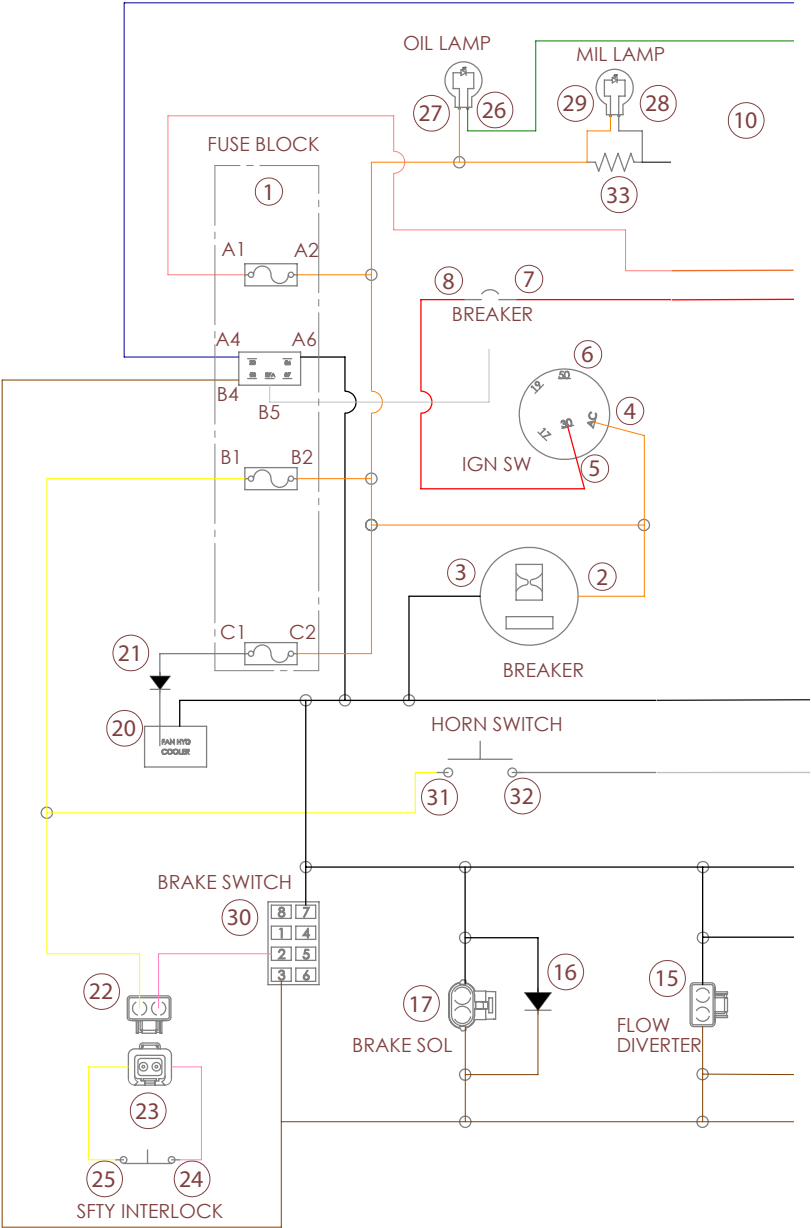
44402 Hydraulic Schematic Rev-A



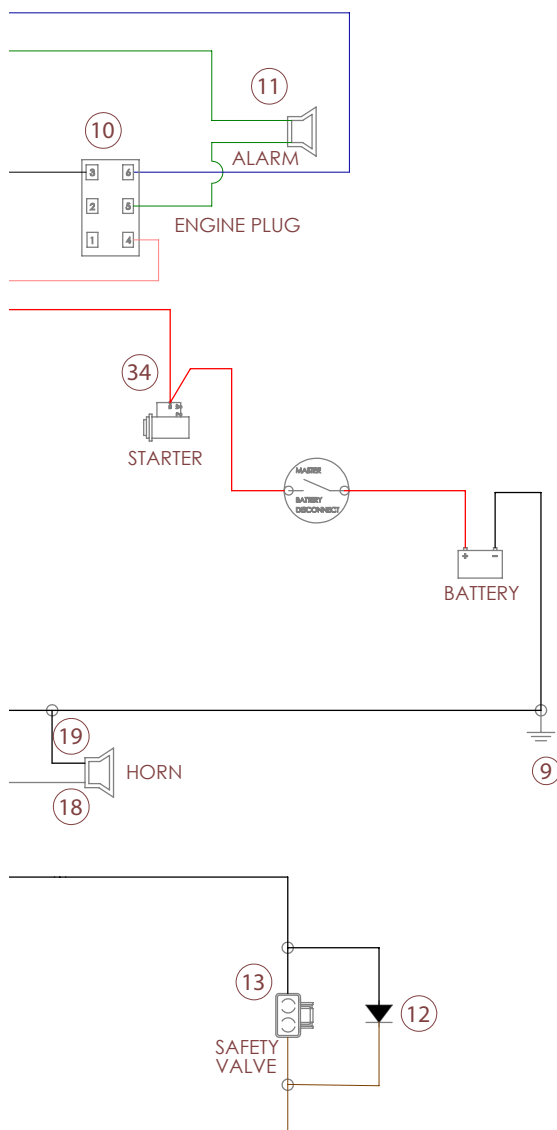
44402 Hydraulic Schematic Rev-A



Wiring Schematic - 43028



Wiring Schematic - 43028



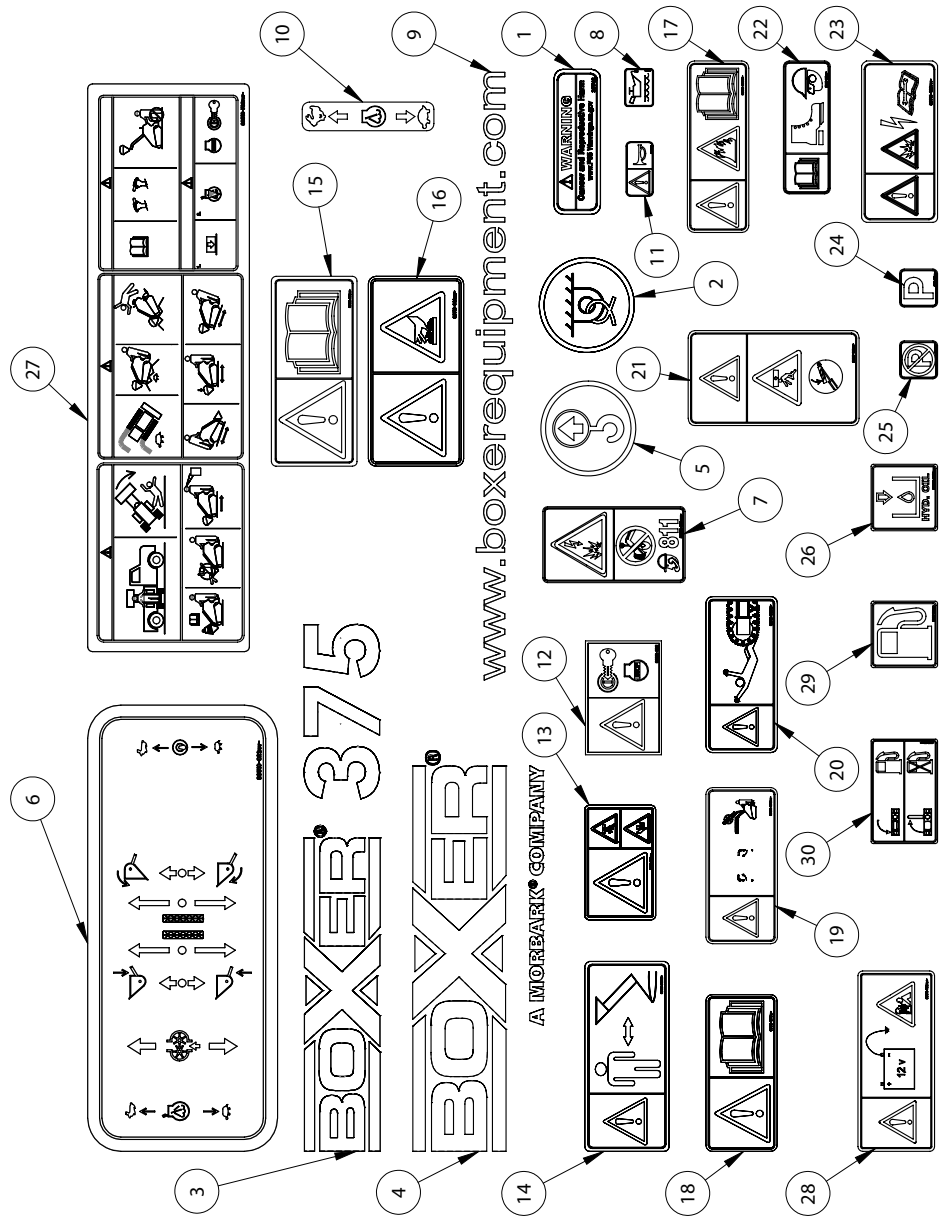
Wiring Schematic - 43028

FROM		WIRE DESCRIPTION (FUNCTION IMPRINT)	GAUGE	COLOR	TO	
PLUG#	PIN#				PLUG#	PIN #
1	A-1	ENGINE RUN POWER	16	RED/WHT	10	4
1	A-2	FUSE POWER	16	ORG	SP1	-
1	A-4	START RELAY SIG OUT	16	DBU	10	6
1	A-6	START RELAY GND	16	BLK	SP2	-
1	B-1	BRAKE SW PWR	16	YLW	SP3	-
1	B-2	FUSE PWR	16	ORG	SP1	-
1	B-4	START RELAY PWR	16	BRN	SP4	-
1	B-5	START RELAY SIG IN	16	WHT	6	-
1	C-1	DIODE ANODE	16	TAN	21	A
1	C-2	FUSE PWR	16	ORG	SP1	-
2	-	HR MTR PWR	16	ORG	SP1	-
3	-	HR MTR GND	18	BLK	SP2	-
4	-	IGN SW AC	16	ORG	SP1	-
5	-	IGN SW 30	10	RED	8	-
7	-	POWER BREAKER	10	RED	34	-
9	-	GND	10	BLK	SP2	-
10	3	MIL LAMP	18	BLK	SP5	-
10	5	OIL LAMP ALARM	18	DGN	11	1
11	2	OIL LAMP	18	DGN	26	-
12	C	DIODE CATHODE	18	PUR	SP4	-
12	A	DIODE ANODE	18	BLK	SP2	-
13	A	SFTY VLV PWR	18	PUR	SP4	-
13	B	SFTY VLV GND	18	BLK	SP2	-
14	C	DIODE CATHODE	18	PUR	SP4	-
14	A	DIODE ANODE	18	BLK	SP2	-
15	A	FLOW DIV PWR	18	PUR	SP4	-
15	B	FLOW DIV GND	18	BLK	SP2	-
16	C	DIODE CATHODE	18	PUR	SP4	-
16	A	DIODE ANODE	18	BLK	SP2	-
17	A	BRAKE SOL PWR	18	PUR	SP4	-
17	B	BRAKE SOL GND	18	BLK	SP2	-
18	-	HORN SIG	18	GRY	32	-
19	-	HORN GND	18	BLK	SP2	-
20	A	DIODE CATHODE	16	TAN	21	C
20	B	FAN HYD COOLER	16	BLK	SP2	-
22	A	SFTY INTERLOCK PWR	16	YLW	SP3	-
22	B	BRK SW PWR	16	PNK	30	2
23	A	SFTY INTERLOCK INPUT	16	YLW	25	-
23	B	SFTY INTERLOCK OUTPUT	16	PNK	24	-
27	-	OIL LAMP PWR	18	ORG	SP1	-
28	-	MIL LAMP	18	BLK	SP5	-
29	-	MIL LAMP PWR	18	ORG	SP1	-
30	3	BRAKE SIG	16	PUR	SP4	-
30	7	BRK SW GND	18	BLK	SP2	-
31	-	HORN SW PWR	16	YLW	SP3	-
33	A	RESISTOR	18	BLK	SP5	-
33	B	RESISTOR	18	ORG	SP1	-

Wiring Schematic - 43028

SPlice CIRCUITS				
SPLICE	WIRE DESCRIPTION	GAUGE	COLOR	CONNECTED TO
SP1	FUSE POWER	16	ORG	1-A2, 1-B2, 1-C2, 2, 4, 27, 29, 33
SP2	GROUND	16	BLK	1-A6, 3, 9, 19, 20, 12-A, 13-B, 14-A, 15-B, 16-A, 17-B, 30-7
SP3	SFTY INTER-LOCK PWR	16	YLW	1-B1, 22-A, 31
SP4	BRAKE SIG	16	PUR	1-B4, 12-C, 13-A, 14-C, 15-A, 16-C, 17-A, 30-3
SP5	MILL LAMP	18	BLK	10-3, 28, 33-A

43580 Decal Kit



43580 Decal Kit

17	1	M39510-603	DECAL, WARNING, REFUELING WARNING
18	2	M39510-604	DECAL, WARNING, ATTACHMENT SECURE
19	1	M39510-606	DECAL, LOCKING PIN
20	2	M39510-607	DECAL, DANGER, CRUSH HAZARD,
21	1	M39510-609	DECAL, WARNING, INSTALL CYL
22	1	M39510-613	LOCK/SYM WA DECAL, WARNING, WEAR PROPER SAFETY GEAR
23	1	M39510-620	DECAL, WARNING, EXPLOSION HAZARD
24	1	M39510-677	DECAL, PARKING BRAKE ENGAGE
25	1	M39510-678	DECAL, PARKING BRAKE DISENGAGE
26	1	M39510-723	DECAL, HYDRAULIC OIL
27	1	M39510-738	DECAL, OPERATOR SAFETY
28	1	M39510-739	DECAL, WARNING, BATTERY GROUND (SYM)
29	1	M39510-741	DECAL, GASOLINE
30	1	M39510-742	DECAL, CLOSE FUEL SHUT-OFF

ITEM	QTY.	PART #	DESCRIPTION
1	1	39748	DECAL-P65 GENERAL WARNING
2	3	41699	DECAL-TIE DOWN POINT
3	2	43581	DECAL, "375"
4	1	44512	DECAL, BOXER, A MORBARK COMPANY
5	1	804666	DECAL-LIFT POINT
6	1	M39510-021	DECAL, OPERATOR CONTROLS "320"
7	1	M39510-129	DECAL, CALL BEFORE YOU DIG
8	1	M39510-233	DECAL, OIL
9	1	M39510-446	DECAL, "BOXEREQUIPMENT.COM"
10	1	M39510-461	DECAL, THROTTLE
11	1	M39510-592	DECAL, HORN BUTTON
12	1	M39510-595	DECAL, E-STOP/BATTERY DISCONNECT
13	4	M39510-597	DECAL, WARNING, CRUSH HAZARD/SYM DANGER
14	2	M39510-600	DECAL, WARNING, STAY BACK/SYM DANGER
15	1	M39510-601	DECAL, WARNING, READ MAN/SYM WARNING
16	2	M39510-602	DECAL, CAUTION, BURN HAZARD/SYM CONNECT

Common Wear Parts

REPLACEMENT PARTS		
DESCRIPTION	PART#	Qty
Ignition Switch w/Key	M29211-935	1
Ignition Key	M29211-929	1
Male Quick Connect	806796	1
Female Quick Connect	806795	1
Platform Spring	M24741-188	2
Fuel Cap	M26849-170	1
Safety Tether Switch w/ Actuator	41754	1
Safety Tether Switch Strap	804787	1
Wrist Strap for Safety Tether Switch	801309	1

MANUALS	
DESCRIPTION	PART#
Parts	PM375DCE-21
Operator Service Maintenance	OSM375DCE-21
Operator Booklet	OB375DCE-21

FILTERS & FILTER KITS		
DESCRIPTION	PART#	Qty
Engine Oil Filter	804814	1
Fuel Filter	M29135-770	1
Air Filter	808007	1
Hydraulic Filter Element In-Tank	M26838-326	1
Machine Filter Kit (Includes Filters+ Engine Oil)	44403	1

TRACK ASSEMBLY PARTS		
DESCRIPTION	PART#	Qty.
Front Idler Assembly LH	M4009-803	1
Front Idler Assembly RH	M40040-803	1
Front Idler Repair Kit	M29834-703	1
Mid-Wheel	M29510-520	6
Mid-Wheel Repair Kit	M29834-704	1
Drive Sprockett	M30109-803	2
Rubber Track	M29510-401	2



Boxer® Warranty Registration

Dear Customer,

Rayco Manufacturing LLC, manufacturer of the Boxer® Compact Utility Loader, would like to thank you for your purchase. Rayco is committed to providing unsurpassed products and product support to our customers. To accomplish this, we need to update our database with information regarding your purchase. Currently, the warranty start date (in-service date) is listed as the date the Boxer® Compact Utility Loader left Rayco, which may be several months before you received and placed your new Boxer® product into service.

To ensure you get the full warranty coverage for your purchase, Rayco Manufacturing LLC will restart the warranty start date (in-service date) if you complete the information below and return this form to us with a copy of the equipment invoice (bill of sale) verifying the in-service date of your Boxer® Compact Utility Loader. Without receipt of this form, we will continue to use the original equipment ship date as the warranty start date (in-service date) and not returning this form may result in denial of warranty entitlements.

To restart the equipment in-service date, simply complete the form below and mail, e-mail, or fax the completed form and bill of sale to:

Rayco Manufacturing LLC
4255 East Lincoln Way
Wooster Ohio, 44691
E-mail: DANH@RAYCOMFG.COM
Phone: 800-392-2686
Fax: 330-264-2155

Company Name: _____ Contact Name: _____

Address: _____

City: _____ State/Province: _____ Zip/Postal Code: _____

Phone: _____ E-mail address: _____

Model No. _____ Serial No. _____ Engine S/N: _____

Location Purchased: _____ Date Purchased: _____

I, (the purchaser), have read and fully understand the operator's manual, safety instructions and warranty conditions provided with this equipment.

In-service date restart will only be accepted if this form and a copy of the bill of sale is completed and returned within 30-days of the in-service date.

RAYCO WARRANTY CERTIFICATE

A. General Outline

Rayco Manufacturing, Inc. warrants to the first user that the products it supplies will be free from defects in material and workmanship under normal and proper usage for a period of 365 days from the date of delivery to the first user. In addition, with respect to "Mini Work-Force" models, the mainframe and control bar will be free from defects in material and workmanship under normal and proper usage for a period of two (2) years from said date of delivery.

This warranty does not cover and Rayco makes no warranties with respect to (i) any product that has been subject to abuse, misuse, misapplication, neglect, alteration or accident; to improper or incorrect repair or maintenance; or to abnormal conditions of use, temperature, moisture, dirt or corrosive matter; and (ii) any material, parts or other components that are manufactured by someone other than Rayco, which items carry only the manufacturer's warranty, if any. Furthermore, this warranty does not cover expendable parts.

Individual components such as engines, engine drive systems, batteries, and hydraulic components, etc. shall be covered by standard warranties of their respective manufacturers. Any claims must be submitted within 30 days of the repair.

B. Individual Components

1. Engines

All engines have specific warranties issued by OEM and honored thru their respective dealer.

2. Hydraulic Components

Hydraulic components have variable warranties. Rayco must preauthorize all hydraulic component product warranties prior to removal from the machine, and all warranty considerations are the sole responsibility of the manufacturer.

3. Batteries

Batteries have a warranty that is honored thru manufacturer. For warranty service, the purchaser is to contact manufacturer directly.

4. Various Components

- a. Belts will be covered under warranty only if Rayco receives warranty from their supplier.
- b. Sprockets Sheaves have a six month limited warranty.
- c. Electric clutches have a six month limited warranty.
- d. Hydraulic Cylinders will be covered under warranty only if Rayco receives warranty from their supplier.

5. Pockets and Teeth

Pockets and Teeth will be covered under warranty only if they are defective before they are mounted on a stump grinder. Once they are used, all warranty stops.

C. Items not Covered

Rayco is not responsible for the following:

1. Premiums charged for overtime labor requested by the purchaser.
2. Transporting the product to and from the place at which warranty work is performed.
3. Any product that has been altered or modified in ways not approved by Rayco.
4. Depreciation or damage caused by normal wear, lack of reasonable and proper maintenance, failure to follow operating instructions, misuse, lack of proper protection during storage, or accident.

D. Unapproved Service Modification

Rayco is relieved of its obligation under this warranty if:

1. Service (other than normal maintenance and replacement of service items) is performed by someone other than an authorized Rayco dealer; or
2. The product is modified or altered in ways not approved by Rayco.

RAYCO WARRANTY CERTIFICATE

E. Obtaining Warranty Service

To obtain performance of this warranty, the original retail purchaser must request warranty service from a Rayco dealer authorized to sell the product to be serviced. When making such a request, the purchaser must present evidence of the product's delivery date, make the product available at the dealer's place of business, and inform the dealer in what way the purchaser believes the product to be defective.

Warranty repairs can be made in the field if the purchaser and servicing dealer so desire. However, travel time expense to and from the job site will be purchaser or dealer responsibility.

If you have a situation where you are not sure if a component is covered under warranty, please do not hesitate to contact us. Rayco wants you and your customer to be 100% satisfied with our products and service.

F. No Implied Warranty or Other Representation

Where permitted by law, neither Rayco nor any company affiliated with it makes any warranties, representations or promises, expressed or implied, as to the quality or performance, or freedom from defect of its products other than those set forth above, and **NO IMPLIED WARRANTY OF MERCHANTABILITY OR FITNESS IS MADE.**

G. Limitation of Purchaser's Remedies

Where permitted by law, the purchaser's only remedies in connection with the branch of performance on any warranty on any Rayco product are those set forth on this page. In no event will the dealer and or Rayco be liable for incidental or consequential damages, including but not limited to: loss of profits, rental of substitute equipment, or other commercial loss.

H. No Dealer Warranty

The selling dealer makes no warranty of his own on any item warranted by Rayco, and makes no warranty on other items unless he delivers to the purchaser a separate written warranty certificate specially warranting the item. A dealer has no authority to make any representation to promise on behalf of Rayco, or to modify the terms or limitations of this warranty in any way.

Read and understand all instructions before attempting to operate this machine. This manual should be readily available for reference at all times.

Additional copies of this manual may be purchased. Contact your Authorized Rayco Dealer or Rayco Manufacturing Inc.

RAYCO Manufacturing, LLC
4255 E Lincoln Way
Wooster, OHIO 44606 U.S.A.
800.392.2686
raycomfg.com

Think Smart, Think Safe.....

We care about your safety. When operating your RAYCO® machinery always wear an approved helmet complete with ear muffs, face shield and the proper eye wear. Never operate under the influence of alcohol or drugs. Know your RAYCO, read and understand your owner's manual cover to cover.

RAYCO Manufacturing Inc. retains the right to make changes in design and specifications; engineering; add or remove features; add improvements; or discontinue manufacturing at any time without notice or obligation.

Thank you for buying and using RAYCO Equipment.

